

MOBILE APP BASED STANDALONE ELECTRONIC DOOR LOCK

SoHo Elock Ace Fingerprint Smart Lock with Bluetooth



FEATURES

Durable lock body with tempered glass surface finish designed to emphasize the aesthetic value

Multiple unlocking methods; fingerprint, PIN and mechanical key independently

360 degree accurate identification with instant verification time of less than 1 sec

Manage lock through SoHo by Vantage mobile application

Unlock remotely and check stored unlock records via Bluetooth function in mobile application

Set permanent users PIN via mobile application and temporary PIN for visitors

Dynamic PIN for time bound access periodic users such as house-keeping staff

LED back lit touch keypad

Interchangeable left or right lock handle alignment supported

Low battery alerts and external USB power terminal for emergency back up when battery is discharged

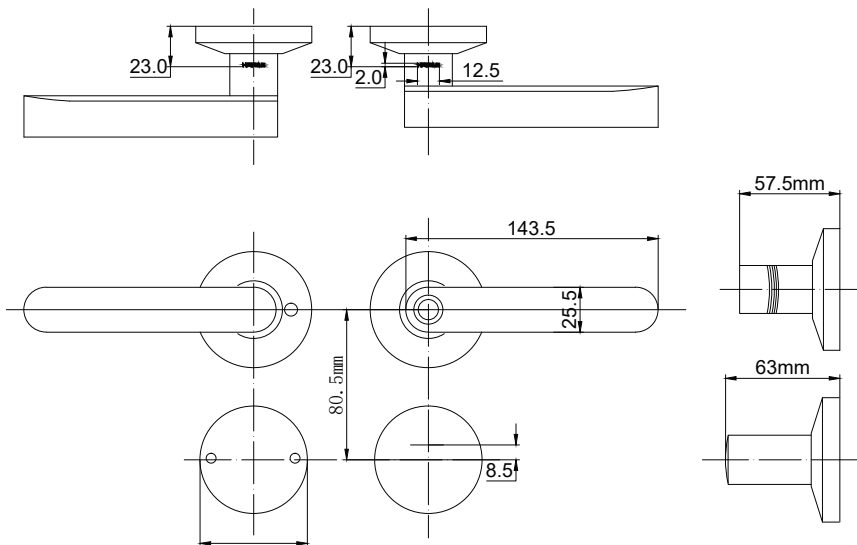
TECHNICAL SPECIFICATIONS

SoHo Elock Ace

Parameter	Specifications
Door Thickness	35-110mm
Mortise	60/70mm single latch
Fingerprint Sensor Type	Semiconductor biometric sensor
Keypad	Touch keypad
Verification Time	≤ 0.5 sec
Bluetooth	Bluetooth version 4.0 Supported
Power Supply	2600mAh Lithium-ion battery
Battery Backup	6-8 months
Lock Override	Mechanical Key supported
Backup Unlocking	Emergency USB port
Fingerprint Capacity	40
Password Capacity	40
Temporary Password	10
Working Temperature	-10°C ~ 60°C
Working Relative Humidity	20% ~ 93%
Material	Zinc Alloy lock body & tempered glass touch board
Dimension	143.5x63/57.5x23mm

*Exact products and specifications shown may vary by geographic region and are subject to change without notice. Weights and measurements are approximate and may vary.

Dimension:



VANTAGE INTEGRATED SECURITY SOLUTIONS LIMITED.

B3, Bredon House 321, Tenttenhall Road Tettenhall, Wolverhampton

West Midlands, WV6 0JZ United Kingdom

Ph: +44-1902-793383, Email: sales@vantagesecurity.com

www.vantagesecurity.com

(AN ISO 9001 : 2008, ISO 14001:2004 CERTIFIED COMPANY)

