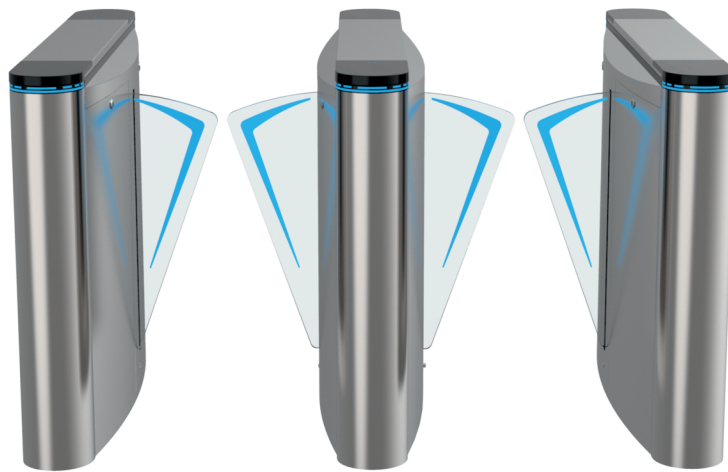


PEOPLE ENTRANCE MANAGEMENT SYSTEM

V-PM3420SC/DC-FBT3 SINGLE/DOUBLE MACHINE CORE FLAP GATE



FEATURES

- Heavy-duty motorized-automatic flap barrier
- Single/dual core bi-direction operating modes supported
- Half height operation with 550mm standard passage width
- LED status indicator & adjustable time out delay
- Automatic reset of barrier gate after each passage
- Integration support with any RFID/Biometric Reader through NO input
- Built-in safety sensors for anti-clip, anti-tailing & anti-reverse functions
- Fail safe & fail lock function supported in case of emergency
- Top quality AISI 304 grade SS construction



LED Direction
Indicators

INGRESS
PROTECTION
RATING

IP44



100%
Duty Cycle



Delay Time



Wired
Terminal

TECHNICAL SPECIFICATIONS

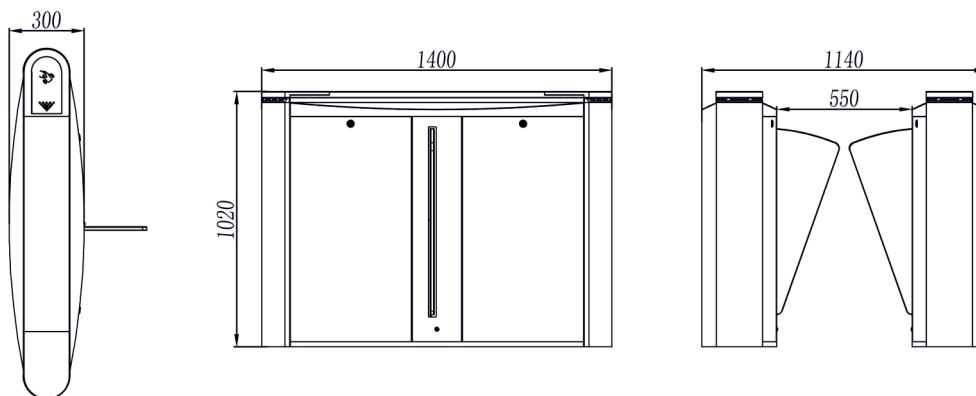
V-PM3410SC/DC-FBT3

Parameter	Specifications
Passage width	Standard 550mm
Throughput rate	35-40 persons per minute
Opening & Closing Speed	0.2 ~ 0.8s
Passing Time	5s default (adjustable 0-60s)
Safety Sensors	5 pairs of infrared sensors for smooth passage traffic and protection of pedestrian
Passage Direction	Unidirectional/ bidirectional
Drive	Electro-mechanical DC motor drive
Power/Mechanism Failure	Fail safe or fail lock status for either one or both directions be in free movement mode (standard) or locks in the home position
Fire Alarm Integration	Supported to provide free passage for evacuation
Motor Power	DC brush motor
Service Life	>5 million operation cycles
Communication Interface	Relay Input (NO/NC/COMM) Optional RS232/RS485
Operating Voltage	DC 24V
Power Supply Voltage	AC100~240 V
Power Consumption	Max. 35W
Working Temperature	-25°C~+70°C
Relative Humidity	≤90% no condensation
IP Rating	IP44
Chassis Material	Top quality AISI 304 grade stainless steel
Door Material	Acrylic
Dimension	1400 x 300 x 1020 mm
Net weight	65kg single core, 75kg double core
Certifications	CE, FCC, ROHS

*Exact products and specifications shown may vary by geographic region and are subject to change without notice. Product image & weights, measurements are approximate and may vary.

DIMENSIONS

Unit: mm



VANTAGE INTEGRATED SECURITY SOLUTIONS LIMITED.

B3, Bredon House 321, Tenttenhall Road Tettenhall, Wolverhampton

West Midlands, WV6 0JZ United Kingdom

Ph: +44-1902-793383, Email: sales@vantagesecurity.com

www.vantagesecurity.com

(AN ISO 9001 : 2008, ISO 14001 : 2004 CERTIFIED COMPANY)

