

# PEOPLE ENTRANCE MANAGEMENT SYSTEM

## VP-PM5040SC/DC-SGT3 SINGLE/DOUBLE MACHINE CORE SWING GATE



### FEATURES

Heavy-duty motorized-automatic swing gate speed barrier

Single/dual machine core with bi-directional operating modes supported

Optional passage height 900mm/1200mm & 600mm/900mm passage width

LED status indicator & adjustable time out delay

Automatic reset of swing barrier after each passage

Integration support with any RFID/Biometric Reader through NO input

Fail safe function supported in case of emergency

Top quality durable SS304 grade construction with IP44 rating



LED Direction  
Indicators

INGRESS  
PROTECTION  
RATING

IP44



100%  
Duty Cycle



Delay Time



Wired  
Terminal

## TECHNICAL SPECIFICATIONS

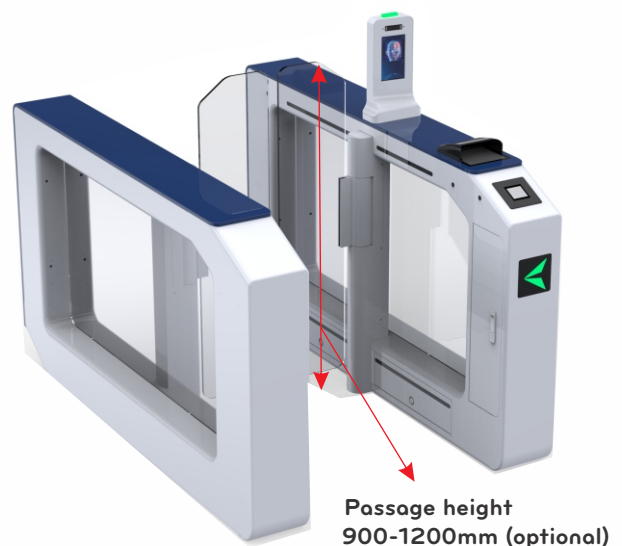
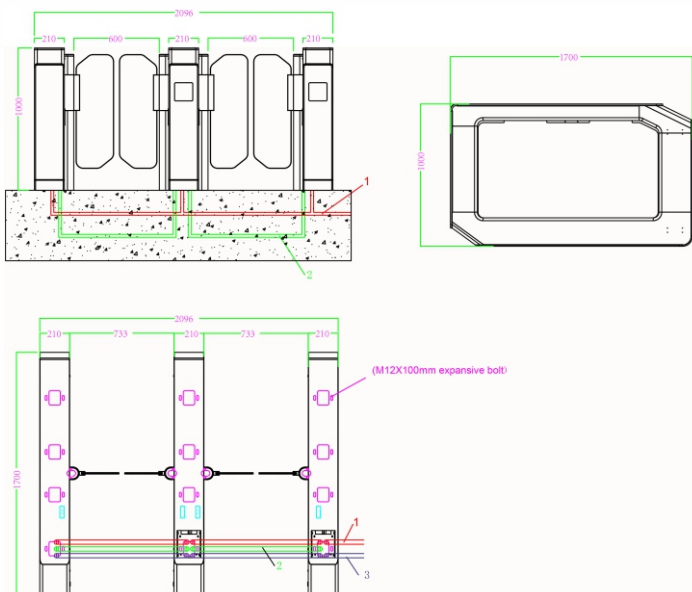
# VP-PM5040SC/DC-SGT3

Parameter	Specifications
Passage Width	≤600mm (standard), ≤900mm (optional)
Passage Height	900-1200mm (optional)
Throughput Rate	35-40 persons per minute
Opening & Closing Speed	0.5s~ 1.5s
Passing Time	5s default (adjustable 0-25s)
Safety Sensors	18 pairs of infrared sensors for smooth passage traffic and protection of pedestrian
Passage Direction	Unidirectional/ bidirectional
Drive	Electro-mechanical DC motor drive
Power/Mechanism Failure	Fail safe status for free passage mode
Fire Alarm Integration	Supported to provide free passage for evacuation
Motor Type	Servo brushless motor
Service Life	>15 million operation cycles
Communication Interface	Relay Input (NO/NC/COMM) Optional RS232/RS485
Operating Voltage	DC 24V
Power Supply Voltage	AC100V~240V
Power Consumption	120W
IP Rating	IP44
Working Temperature	-25°C~+70°C
Relative Humidity	≤90% no condensation
Chassis Material	Main body : Stainless Steel S304 grade Side Panel : Acrylic
Door Material	Composite Poly Carbonate
Dimension	1700 x 210 x 1000 mm
Net Weight	120kg single core      140kg double core
Certifications	CE, FCC, ROHS

\*Exact products and specifications shown may vary by geographic region and are subject to change without notice. Product image & weights, measurements are approximate and may vary.

## Dimension & Installation Diagram

Unit: mm



## VANTAGE INTEGRATED SECURITY SOLUTIONS LIMITED.

B3, Bredon House 321, Tenttenhall Road Tettenhall, Wolverhampton

West Midlands, WV6 0JZ United Kingdom

Ph: +44-1902-793383, Email: sales@vantagesecurity.com

[www.vantagesecurity.com](http://www.vantagesecurity.com)

(AN ISO 9001 : 2008, ISO 14001:2004 CERTIFIED COMPANY)

