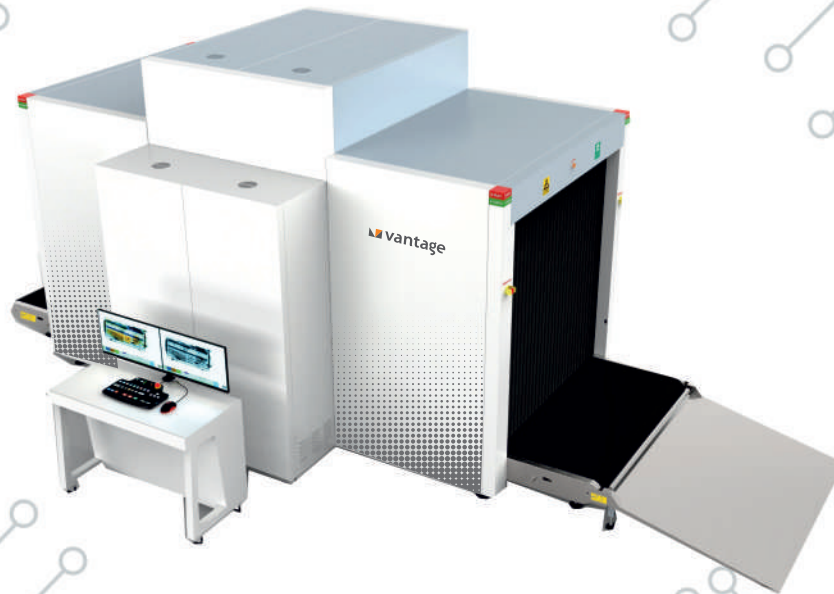


IMAGING & SCREENING SECURITY SYSTEM

VP-XR15020D-BSS16 DUAL VIEW X-RAY BAGGAGE SCANNER



FEATURES

- Radiation safe dual X-ray generator technology with high penetration
- Suitable for scanning large baggage at borders/immigration security check points and cargo terminals
- Dual view display with high resolution imaging for efficient security
- Clear and distinct imaging with improved zooming ratio up to 64 times
- Dual energy penetration system supports high/low density and organic/inorganic discerning
- Auto-inspection of drugs and explosives with threat alert system
- Supports real-time storage and retrieval of scanned images
- Energy saving & environmental protective design

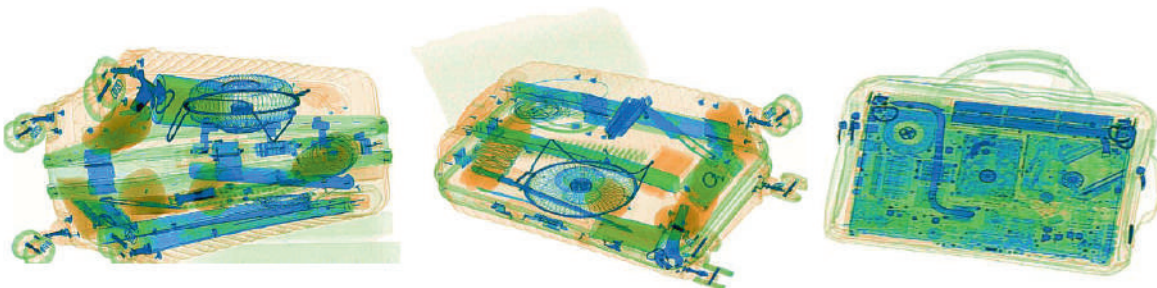
TECHNICAL SPECIFICATIONS

VP-XR15020D-BSS16

X-Ray Generator	Tunnel Size	1500(W) x1500(H)mm
	Wire Resolution	Typical AWG36(top view); Typical AWG38(side view)
	Penetration Resolution	Typical AWG32(top view); Typical AWG32(side view)
	Steel Penetration	40mm(top view); 45mm(side view)
	Spatial Resolution	Vertical:1.3, horizontal:1.3 (top view); Vertical:1.3, horizontal:1.3 (side view)
	Tube Voltage	200KV
	Beam Direction	Vertical and Horizontal
	Cooling	Sealed oil cooling
	Duty Cycle	100%
	Noise Level	≤60dB
	X Ray Dose Per Inspection	≤ 4.8μSv(uGy)
	Duty Cycle	100%
	Radiation Leakage	≤0. 5 μSv /h(uGy/h)
	Leakage Current	≤5.0mA
	X Ray Generator	Two generators for dual view
Image Processing System	Computer Console	CPU: Intel® i3® 3.3GHz, Hard drive: 1TB.Storage : 2G
	Operating System	Windows 10
	Zoom	Variable zoom up to X64, support continuous magnification
	Display	2 x 27-inch monitor, full HD resolution 1920x1080
	Image Retrieval	30 images
	Storage Capacity	10,000 image, supported format JPG, BMP, XF, PNG, TIFF, GIF data backup via USB
	Film Safety	In accordance with ASA/ISO1600 film safe standard
	Control Keyboard	Standard function keyboard/Special function Keyboard (optional)
Mechanical	Image Processing	Color / black & white imaging, local enhancement, high penetration, low penetration, organic and inorganic discerning, reverse color, brightening, darkening, gray level scan/ variable density, pseudo color imaging, edge enhancement imaging etc. Alerts upon of detection of suspicious items.
	Conveyor Speed	0.25-0.3 m/s
	Conveyor Height	316mm
	Load Capacity	2000 kgs
	Roller Table	Integrated on both sides (optional)
	Electric Motor	3 Phase
	Overall Dimensions	5963(L)x2281(W)x2450(H)mm
Net Weight	4000kg	
Power & Environmental	Working Temperature /Humidity	5 °C ~ 40°C/ 0%-90%(non-condensing)
	Storage Temperature /Humidity	-20°C-60°C /10%-90%(non-condensing)
	Atmospheric Pressure	86kPa-106kPa
	Working Voltage	AC 220V(+10% ~ -15%) 50±3Hz
	Power consumption	Max. 2.5KW
Certifications	Certifications	CE, FCC,RoHS

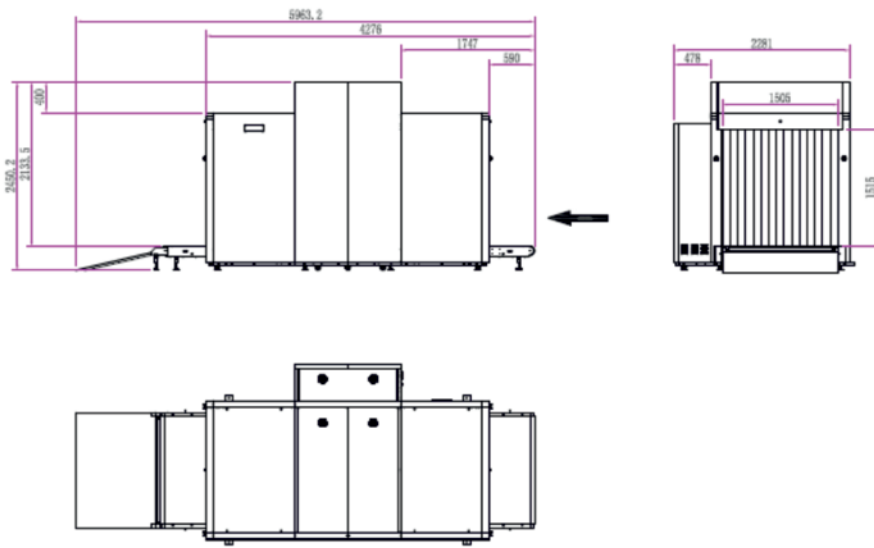
*Exact products and specifications shown may vary by geographic region and are subject to change without notice. Weights and measurements are approximate and may vary.

Screening :



VP-XR15020D-BSS16

Dimension:



VANTAGE INTEGRATED SECURITY SOLUTIONS LIMITED

B3, Bredon House 321, Tenttenhall Road Tettenhall, Wolverhampton

West Midlands, WV6 0JZ United Kingdom

Ph: +44-1902-793383, Email: sales@vantagesecurity.com

www.vantagesecurity.com

(AN ISO 9001 : 2008, ISO 14001 : 2004 CERTIFIED COMPANY)

