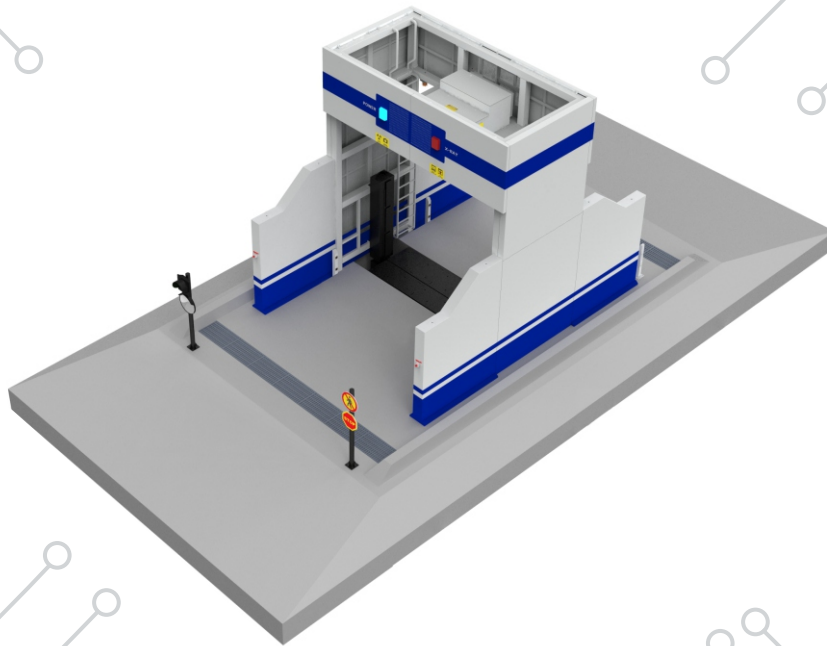


IMAGING & SCREENING SECURITY SYSTEM

VP-XR2180-VSS16 Cargo and Vehicle Inspection X-Ray Scanner



FEATURES

Efficient full vehicle scanning system for passenger vehicles and small cargo including mini buses

Drive through technology with ultra-low X-ray radiations dose completely safe for objects inside the vehicle

X-ray scanner with 3.8m x 3m portal-shaped detection system

Lateral X-ray scanning of vehicle for effective imaging for detection of contraband, illegal drugs, weapon and other dangerous objects

Password protected software system for user management, real-time data & playback

TECHNICAL SPECIFICATIONS

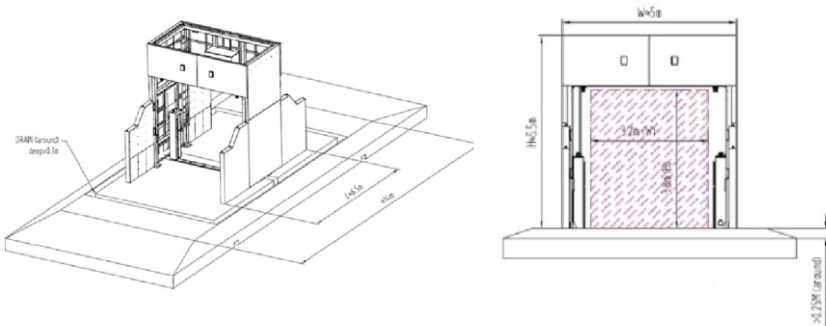
VP-XR2180-VSS16

General Specifications	Tunnel Size	3. 8(L)m x 3(H)m (customizable)
	Typical Throughput	150 vehicles/hour
	Max Vehicle Length	20 meter extendable
	Scanning Speed	5-10km/h
X-Ray Generator (Single)	Dual Energy Accelerator	200Kv (optional 300Kv)
	Cooling	Sealed oiled cooling
	Detector Beam Shape	High resolution L-shaped detector line
	X-Ray Direction	From top to bottom
	X-Ray Dose per Inspection	<0.2 μ Sv / scan
	Dose Rate Outside	Public area<0.5 μ sv compliant with IAEA standard
	X-Ray leakage	<5 μ Sv/h, anywhere 10m away from the generator of the system
	Wire Resolution	Dia 1.0mm copper wire
	Steel Penetration	Typical 65mm steel, application 40mm steel
	Power Consumption	Maximum 3KVA
Imaging & Management	Image Functions	Color/ black & white imaging, reverse color, organic &, inorganic distinction
	Image Enhancement	Local and super enhancement
	Brightness Control	Supported
	Digital Zoom	Up to 64X supported
	Operating Console	Lockable workstation based on Intel core processor computer
	Operating Platform	Windows 7 or Windows 10
	Monitor	24" LCD with 1920x1080 display resolution
Power & Environmental	Safety Standard	Comply with requirements of safety standard GB15208.0-2005
	Film Safety	Guarantee ASA/ISO1600 Film
	Operating Temperature	-15°C-55°C
	Operating Humidity	95%(non- condensing)
	Operation Power	220VAC(\pm 10%) 50 \pm 3Hz (Optional:100VAC,110VAC,120VAC,200VAC)
Mechanical	Equipment Dimensions	16.5(L) x 6.5(W) x 5.5(H) M
	Installation Area (Shielding)	16.5(L) x 6.5(W) x 6.5(H)M
	Equipment Weight	Approx. 6350 Kgs
Certifications	Certifications	CE, FCC,RoHS

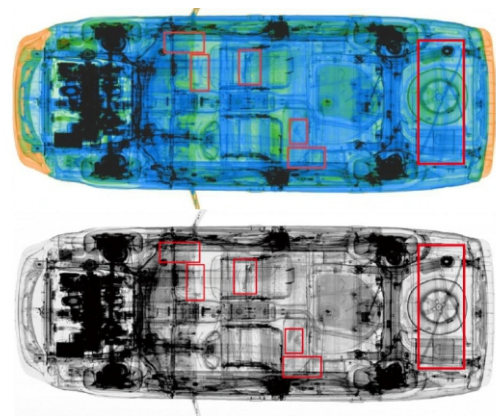
*Exact products and specifications shown may vary by geographic region and are subject to change without notice. Product image, weights and measurements are approximate and may vary.

DIMENSIONS

Unit: mm



SCANNED IMAGES



VANTAGE INTEGRATED SECURITY SOLUTIONS LIMITED

B3, Bredon House 321, Tenttenhall Road Tettenhall, Wolverhampton

West Midlands, WV6 0JZ United Kingdom

Ph:+44-1902-793383, Email: sales@vantagesecurity.com

www.vantagesecurity.com

(AN ISO 9001 : 2008, ISO 14001 : 2004 CERTIFIED COMPANY)

