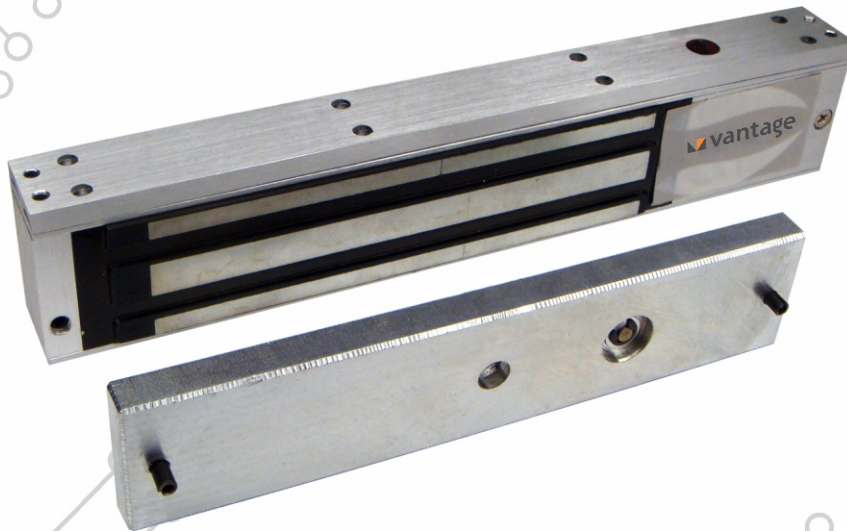


ACCESS CONTROL ACCESSORIES

VV-AX601EM-SDH2

SINGLE DOOR EM LOCK 600 LBS WITH DOOR STATUS
FEEDBACK



FEATURES

Single Door Electro-magnetic Lock with 600 Lbs holding force

Surface mount

With dual color LED indication

Operating voltage 12VDC

Current drawn 500mA

MOV surge protection

With relay circuit for door status feedback

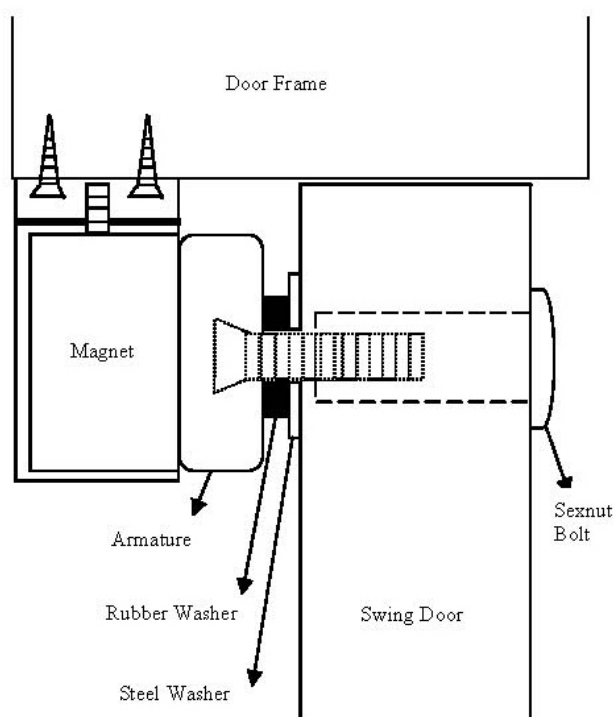
VV-AX601EM-SDH2

Parameter	Specifications
Holding Force	600 lbs for Single Door
Connection Interface	2 wires default / 5 wires optional
Audio Visual Alarm	Built-in LED & buzzer (optional)
Lock Signal	Supported
Voltage	Supported
Time Delay	Supported
Push	Supported
Door Status	Optional
Construction	Durable aluminum, special anti-residual magnetism design for safer access control automation
Service Life	1,000,000 operations
Voltage	DC 12V 450mA or DC 24V 200mA
Power Supply	DC 12V 1A
Accessories	Optional brackets: Z, L & U type
Operating Temperature	-30° C to 70° C
Dimension	250(L) x 47(W) x 26(H) mm
Certifications	CE, FCC, ROHS

*Exact products and specifications shown may vary by geographic region and are subject to change without notice. Product image, weights and measurements are approximate and may vary due to customized solutions & products being offered as per customer requirements.

Installation Guide

Unit:mm



VANTAGE INTEGRATED SECURITY SOLUTIONS LIMITED.

B3, Bredon House 321, Tenttenhall Road Tettenhall, Wolverhampton

West Midlands, WV6 0JZ United Kingdom

Ph:+44-1902-793383, Email: sales@vantagesecurity.com

www.vantagesecurity.com

(AN ISO 9001 : 2008, ISO 14001:2004 CERTIFIED COMPANY)

