

ENTRANCE MANAGEMENT SYSTEMS

VV-VM2300UV-PS16 PORTABLE UNDER VEHICLE SURVEILLANCE SYSTEM



FEATURES

Automatic high resolution digital line scan camera with greater image clarity & detailing of minute objects

Real-time display of vehicle scanning and processed images of under-carriage

Simultaneous monitoring & recording of images of multiple areas of the vehicle

Strong scalability to easily achieve a variety of system linkage control

Optional integration of automated number plate recognition (ANPR) for vehicle identification

IP68 rated weather proof scanning unit

Management software package for UVSS

TECHNICAL SPECIFICATIONS

VV-VM2300UV-PS16

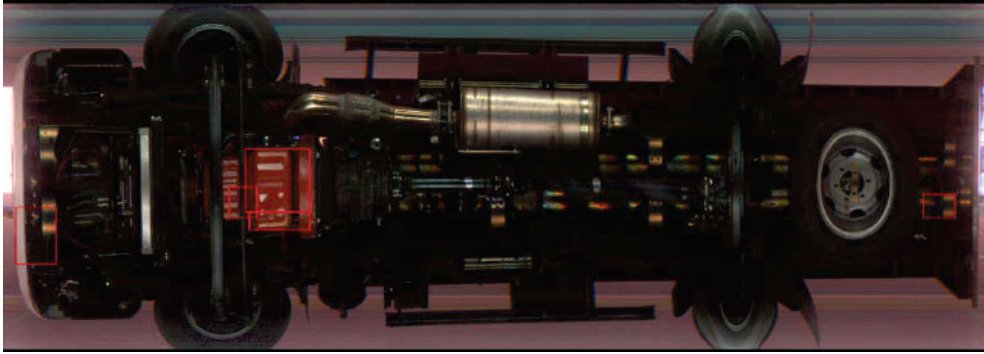
Parameter	Specifications
Technology	Linear array CCD scan technology and dynamic imaging of BW/color
Scanning Resolution	≥ 2048 pixels CCD / ≥ 4096 pixels CCD
Maximum Scanning Rate	18kHz
Viewing Angle	< 4 meters
Speed of Vehicle	1-60 km/h, recommend < 30 km/h
Scanner Data Line	10 meters(length customizable)
Communication Interface	RS232/RS422
Field of View	< 170°
LED Illumination	160W
Lighting Components	2 single sealed LED surface light sources, life 50000h
Imaging Speed	<1 second
Image Display Mode	Large-format horizontal display
Image Storage Format	Standard BMP or JPEG
Image Data Transmission	RJ45 network
Scene Image Display	≥ 1 channel
Image Search	Retrieve the image by date, time, license plate number, and images
Image Resolution	12000 × 6144
Image Storage	Up to 10,000 pictures (FIFO)
Automatic Scan	Display the image in 1s after the vehicle passes at a speed of 1-65km/h
Imaging Function	Adjust saturation, contrast, balance and sharpening, zoom in and out (1-16)
Monitor	22-inch true color LCD monitor
Console	Lockable console desk available for display and keyboard
CPU	Intel Quad-Core Processor
RAM	DDR3, >2GB
Hard Disk	500G High Speed Hard Disk
Graphics Card	DDR3, 192BIT Independent Graphics Card
Platform	Windows XP/ Windows 7
Load Capacity	30T
Water-Proof Grade	IP68
Operating Voltage	AC110-240V 50~60Hz ±3Hz
Operating Temperature	25°C to 60°C
Storage Temperature	25°C to 75°C
Scanning Device Weight	28KG
Scanning Device Dimension	450 x 400 x 88 mm
Certifications	CE, FCC, ROHS

*Exact products and specifications shown may vary by geographic region and are subject to change without notice. Product image, weights and measurements are approximate and may vary due to customized solutions & products being offered as per customer requirements.

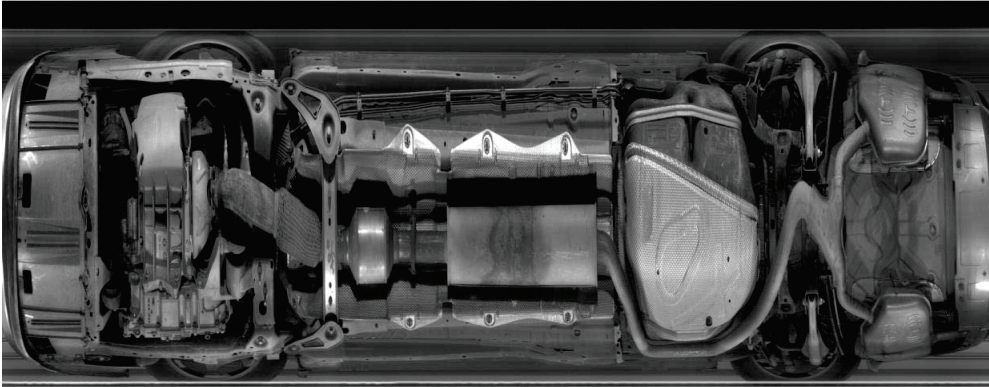


VV-VM2300UV-PS16

Color imaging at high resolution



Black & white imaging at high resolution



VANTAGE INTEGRATED SECURITY SOLUTIONS LIMITED.

B3, Bredon House 321, Tenttenhall Road Tettenhall, Wolverhampton

West Midlands, WV6 0JZ United Kingdom

Ph: +44-1902-793383, Email: sales@vantagesecurity.com

www.vantagesecurity.com

(AN ISO 9001 : 2008, ISO 14001 : 2004 CERTIFIED COMPANY)

